

## Air & Vacuum Relief Tank Vent Valve

2014  
**NEW**



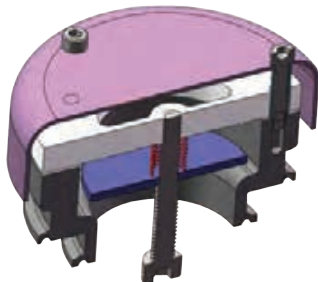
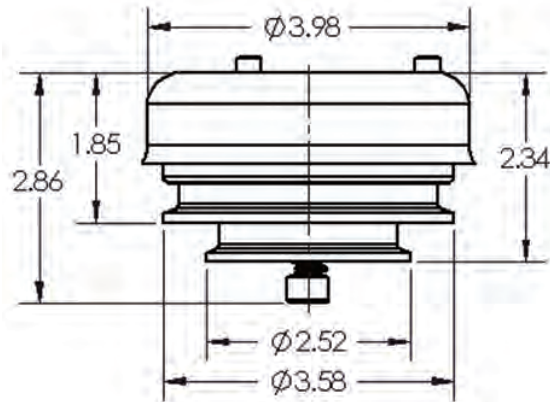
**Features:**

- The valve relieves pressure as the fluid level rises while filling a tank.
- The valve relieves vacuum as the fluid level drops while emptying a tank.
- 2" and 3" clamp connections on the same valve
- dome helps in preventing external contamination
- light weight, robust PVC and 304 stainless steel construction
- can use any clamp gasket
- maximum flow rate: 500 GPM
- vacuum break: .1 **PSI**
- pressure relief: .1 **PSI**

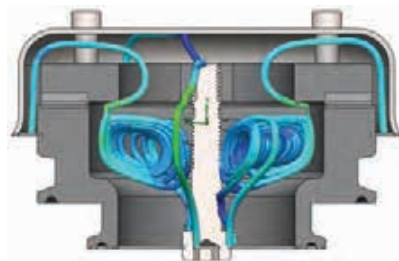
Part #

**TVPC200-300**

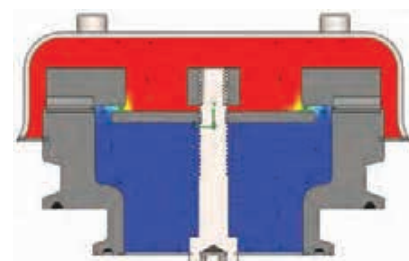
**Dimensions**



Assembly



Vent Flow Pipes

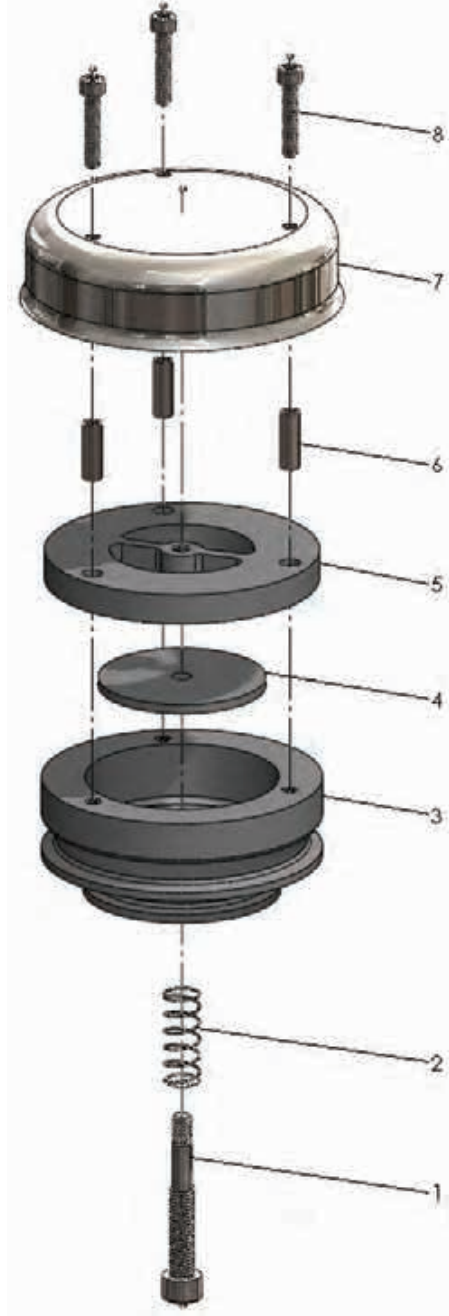


Pressure Analysis



## Tank Vent Valve - Exploded View

2014  
**NEW**



Item	Description	Material	Quantity
1	spring bolt	304 stainless steel	1
2	spring	304 stainless steel	1
3	body	PVC	1
4	check plate	PVC	1
5	flow plate	PVC	1
6	spacer	304 stainless steel	3
7	cap	304 stainless steel	1
8	cap bolt	304 stainless steel	3

