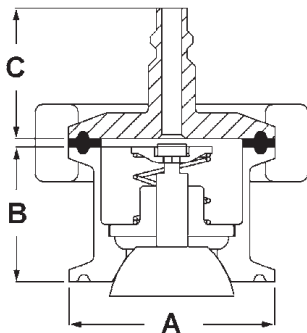


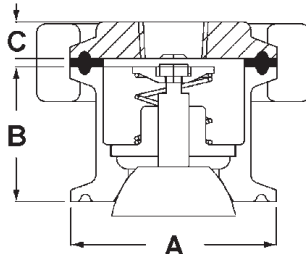


Air Blow Check Valves

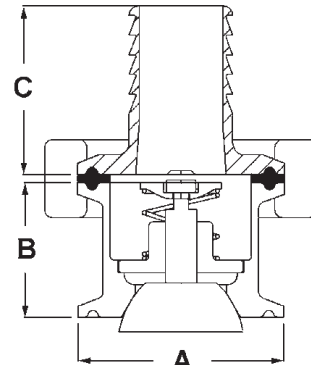
Product Specifications



B45AB



B45BC



B45CC

Features:

- 3A Standards 58-00, Check Valves and Vacuum Breakers
- 316L stainless steel with EPDM stem seat and gasket
- maximum operating temperature: **212°F**
- maximum operating pressure: **145 PSI**

Size	A	B	Quick-Connect Plug Part Number	Dim. C	Female NPT Part Number	Dim. C	Hose Barb Part Number	Dim. C
1" - 1½"	1.984	1.30	B45AB-R100150	1.26	B45BC-R100150	0.6	B45CC-R100150	1.7
2"	2.516	1.30	B45AB-R200	1.26	B45BC-R200	0.6	B45CC-R200	1.7
2½"	3.047	1.30	B45AB-R250	1.26	B45BC-R250	0.6	B45CC-R250	1.7
3"	3.579	1.30	B45AB-R300	1.26	B45BC-R300	0.6	B45CC-R300	1.7
4"	4.682	1.30	B45AB-R400	1.26	B45BC-R400	0.6	B45CC-R400	1.7

All dimensions are in inches unless otherwise noted. Engineering dimensions are available upon request. Specifications are subject to change without notice.

Repair Kit

- repair kit, **B45AB-RK**, contains:
- (1) EPDM / 316L stainless perforated disc
 - (1) 304 stainless spring retainer
 - (1) 304 stainless spring
 - (1) nylon stem guide
 - (1) 316L / EPDM stem and plug

Sizing Chart

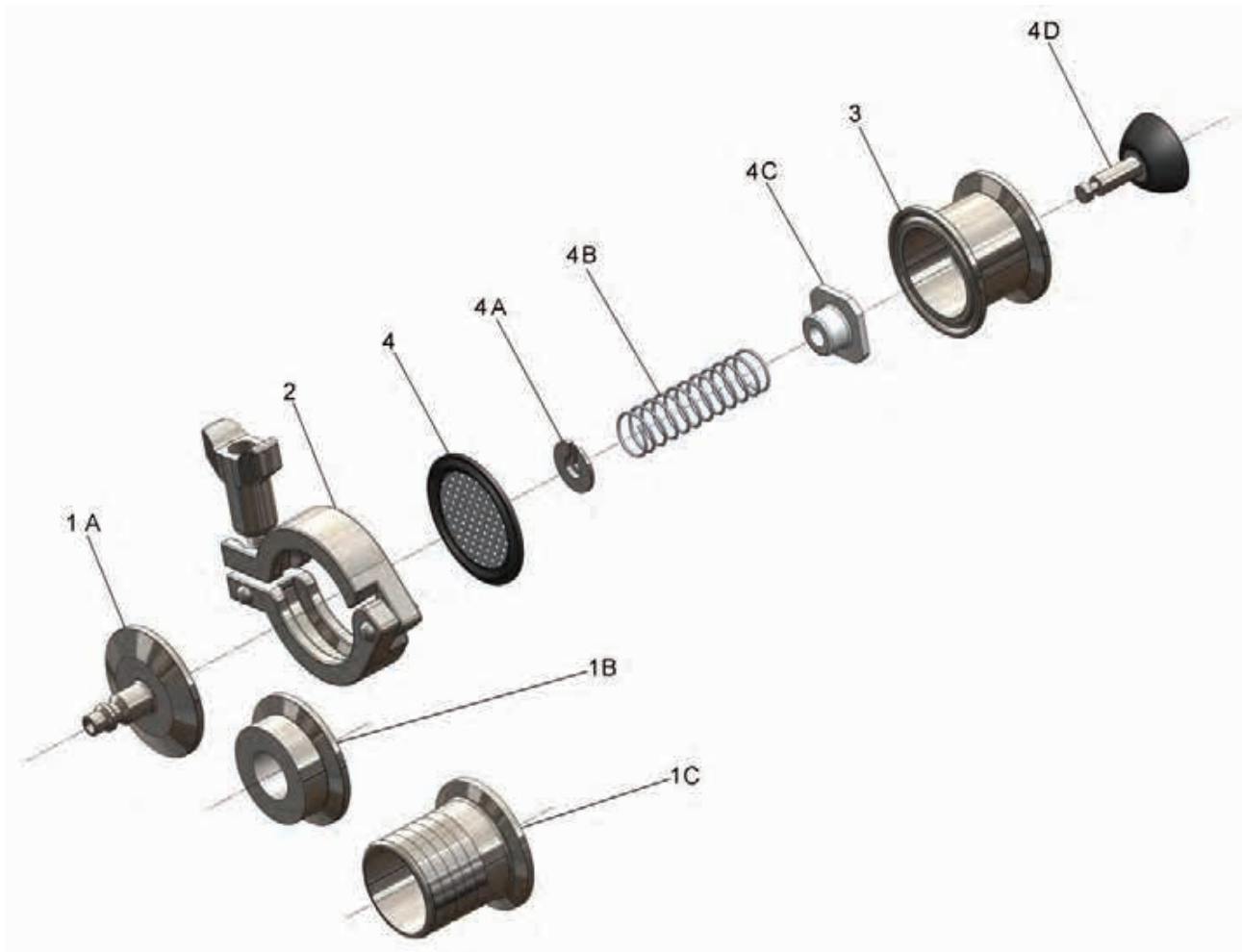
When using air blow check valves with ball check valves, refer to the sizing chart below.

Ball Check Valve size	Air Blow Check Valve size
1½"	2"
2"	2½"
2½"	3"
3"	4"



Air Blow Check Valves

Bill of Materials



Item	Description	Material	Quantity
1A	1/4" air line quick connect	316L	1
1B	1/2" NPT cap	316L	1
1C	1" hose barb	316L	1
2	single pin clamp	CF8	1
3	valve body	316L	1
4	perforated disc	EPDM/316L	1
4A	spring retainer	304	1
4B	spring	304	1
4C	stem guide	nylon	1
4D	stem and plug	316L/EPDM	1
<i>Filter Discs (optional) Must be used when installed in 3A applications</i>			
B45ABFD150	filter disc pack	1 micron filter	50

- filter discs (optional) must be used when installed for Accepted Practice 3A 604-05, Supplying Air under Pressure in Contact With Milk, Milk products and Product Contact.

